

The logo for the Rural Minnesota Energy Board features a stylized green swoosh that loops around the text.

# **RURAL MINNESOTA ENERGY BOARD**

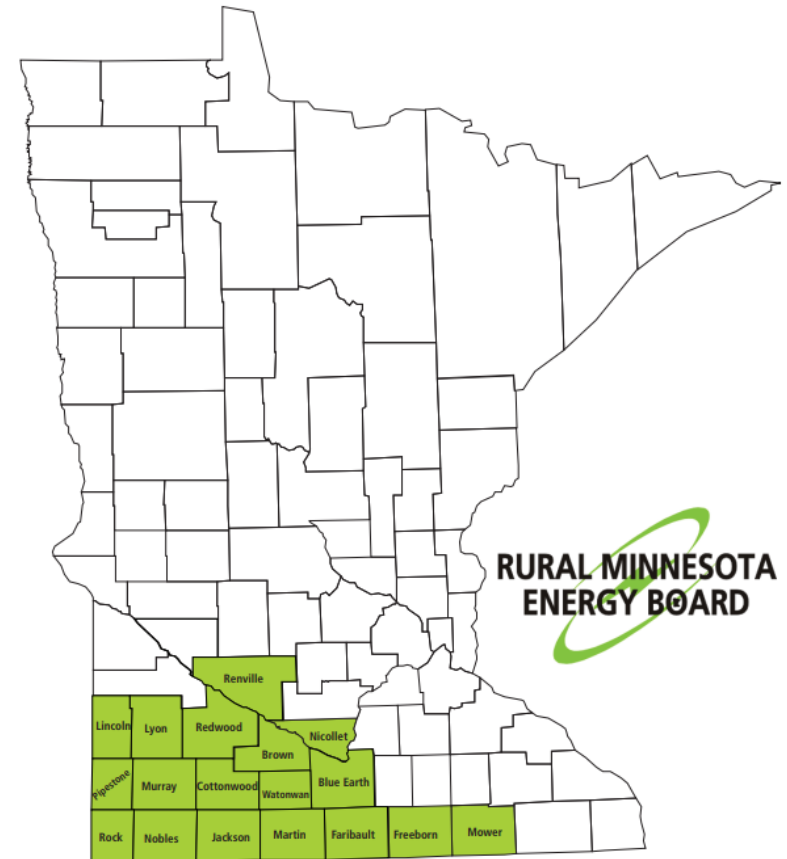
**RMEB.ORG**

## Opportunities for Renewable Energy Growth in Southern Minnesota

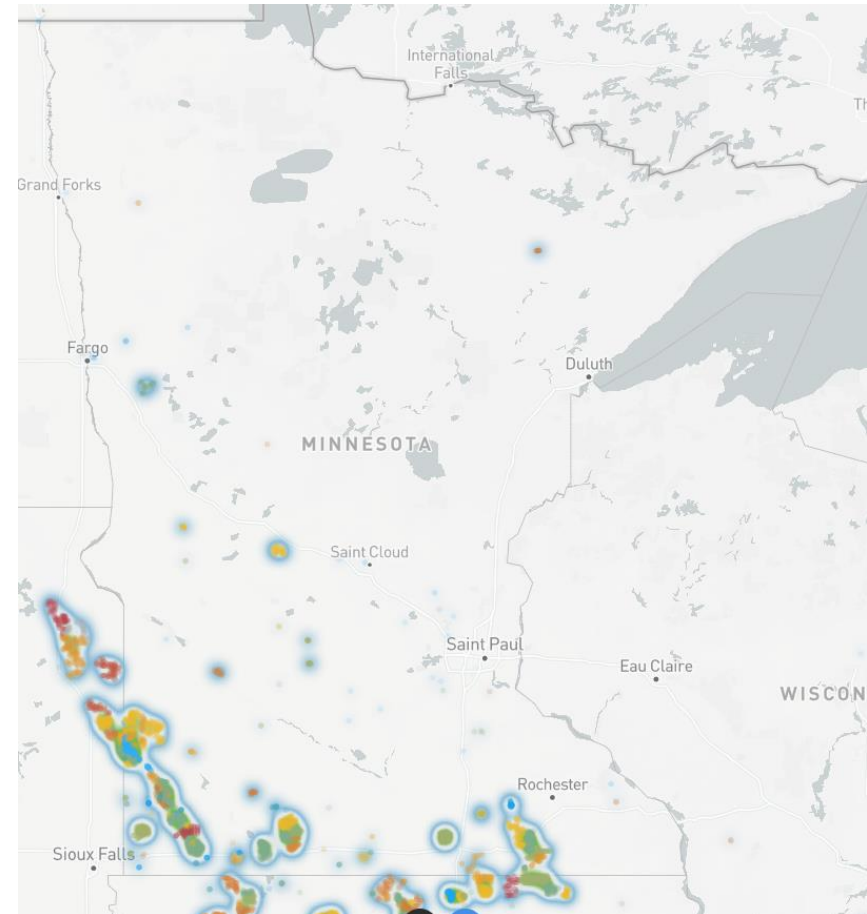
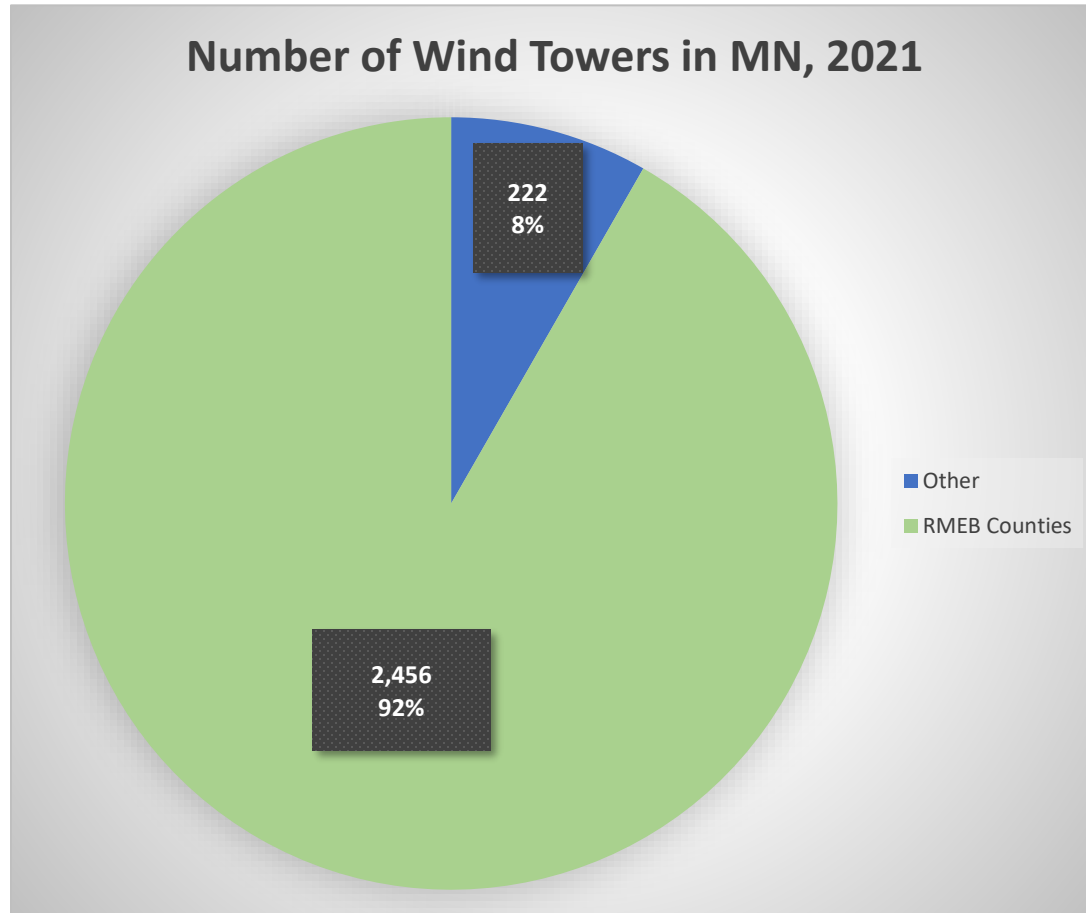
Presenters: Tom Appel, RMEB Chair and Molly Malone, Murray County  
Commissioner

# Who We Are

- The Rural Minnesota Energy Board is a Joint Powers of 18 counties in southern Minnesota; formed to provide policy guidance on issues surrounding energy development in rural Minnesota.



# MN Wind Energy Production in RMEB Region



Hoen, B.D., Diffendorfer, J.E., Rand, J.T., Kramer, L.A., Garrity, C.P., and Hunt, H.E., 2018, United States Wind Turbine Database v5.2 (October 12, 2022): U.S. Geological Survey, American Clean Power Association, and Lawrence Berkeley National Laboratory data release, <https://doi.org/10.5066/FTX3DN0>.

# MN Wind Energy Production in RMEB Region

Energy Source	Number of Towers 2021	Number of Towers 2022	Production in MWh 2021	Production in MWh 2022	2021 Tax	2022 Tax
Cottonwood Wind	90	90	581451	613133	\$ 697,741.50	\$ 735,759.08
Faribault Wind	22	22	87921	69638	\$ 103,220.17	\$ 83,565.43
Freeborn Wind	123	147	520547	412107	\$ 624,508.16	\$ 487,728.33
Jackson Wind	349	349	1539261	1217253	\$ 1,823,269.43	\$ 1,435,458.99
Lincoln Wind	500	600	2143479	2958351	\$ 2,515,228.86	\$ 3,492,811.60
Lyon Wind	9	9	28907	19089	\$ 34,688.40	\$ 22,906.55
Martin Wind	60	60	279024	294602	\$ 320,984.68	\$ 341,919.63
Mower Wind	341	384	1781682	1636912	\$ 2,097,791.64	\$ 1,930,042.68
Murray Wind	252	252	1113489	740896	\$ 1,273,940.87	\$ 834,414.44
Nobles Wind	253	253	1194720	1410359	\$ 1,411,291.69	\$ 1,660,173.88
Pipestone Wind	156	158	1130697	1086108	\$ 1,198,902.97	\$ 1,097,783.94
Redwood Wind	2	2	9833	9346	\$ 3,539.88	\$ 3,364.56
Rock Wind	125	125	673394	657508	\$ 792,326.91	\$ 767,870.69
Watonwan Wind	5	5	29445	13704	\$ 35,334.00	\$ 16,444.80

# Impact of Curtailment

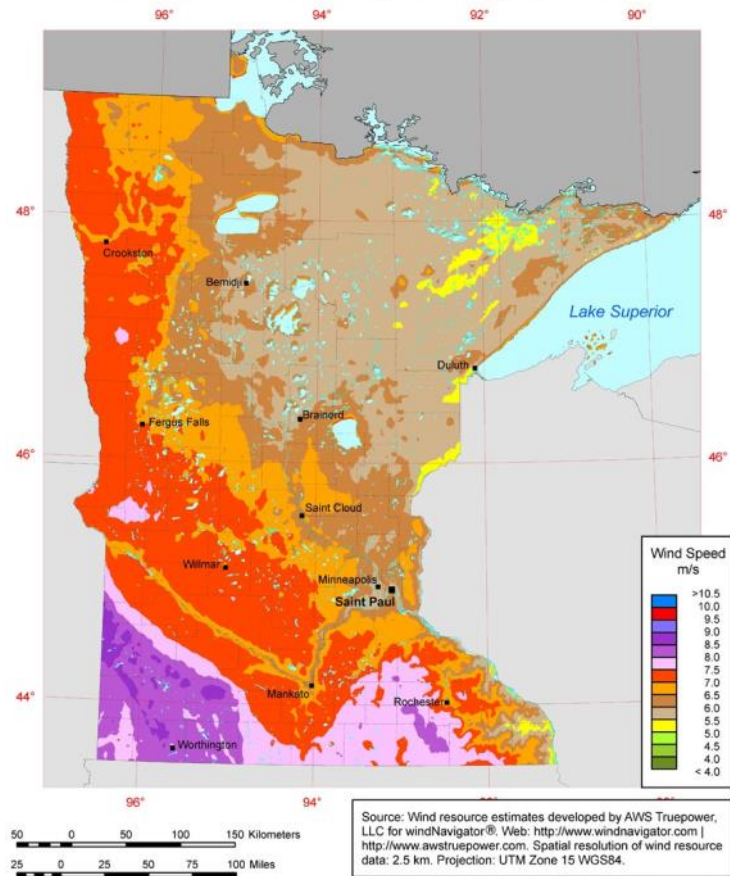
Changes in Wind Energy Production Tax Revenue in Southwest Minnesota

Community	2020	2021	2022	Change 2021-22	Change in \$ 2021-22
Murray County (pop. 8,247)	\$1,149,781	\$1,273,941	\$834,414	-34%	-\$439,527
Murray Co, Fenton Twp (pop. 171)	\$276,415	\$326,835	\$151,942	-54%	-\$174,893
Nobles Co, Dewald Twp (pop. 258)	\$225,079	\$243,668	\$120,535	-51%	-\$123,133
Nobles Co, Olney Twp (pop. 209)	\$75,026	\$81,223	\$40,178	-51%	-\$41,045
Nobles Co, Summit Lake Twp (pop. 327)	\$360,284	\$352,135	\$184,824	-48%	-\$167,311
Nobles Co, Wilmbnt Twp (pop. 286)	\$98,720	\$116,728	\$54,265	-54%	-\$62,462
Jackson Co, Enterprise Twp (pop 182)	\$463,605	\$414,813	\$311,784	-25%	-\$103,029

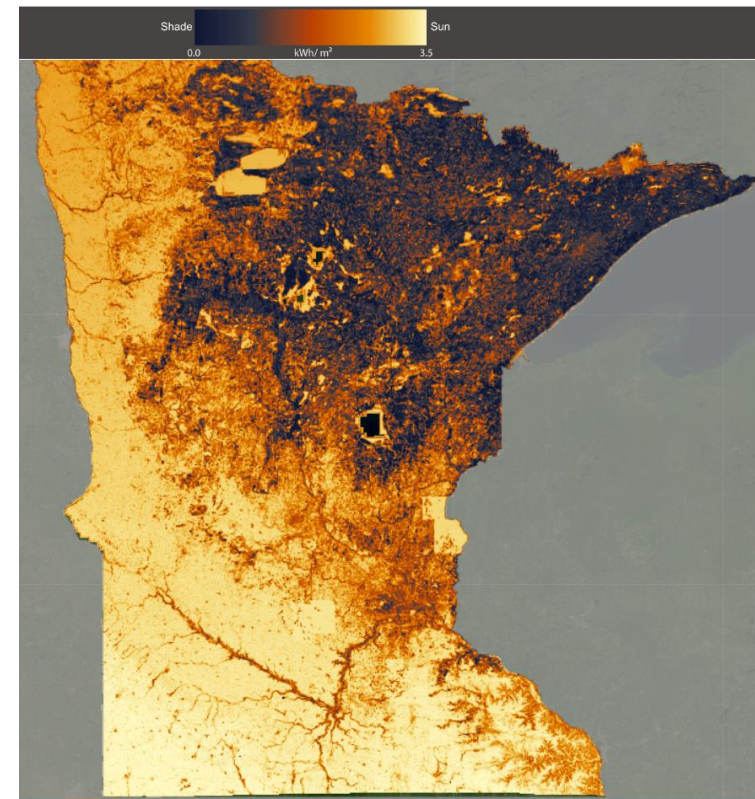
\*Figures are whole numbers. 80% goes to the county, 20% to the township

# MN Wind and Solar Resources

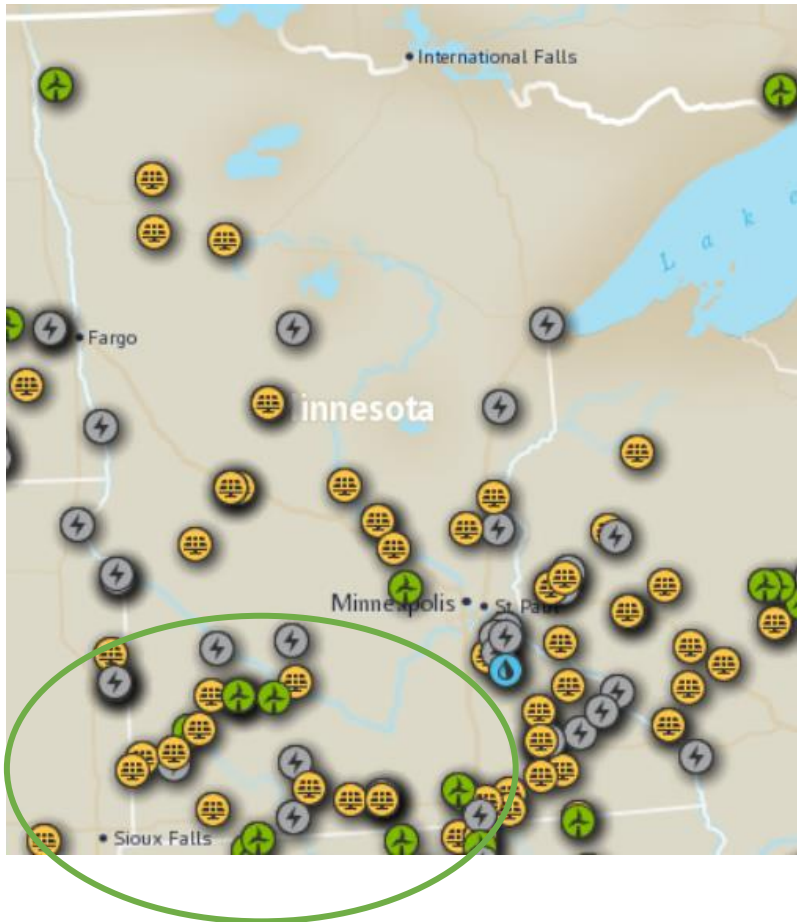
### Minnesota - Annual Average Wind Speed at 80 m



### Solar Potential in MN



# MISO Queue – Nov 21, 2022 Snapshot



Developers of wind, solar and storage see the potential for future projects in the RMEB region with over 6 GW of generation and storage in the queue.

# RMEB Wants to be Part of the Solution

Who do we need to engage?

Why don't we see new transmission lines coming through our region?

What do we need to do?

How do we make this go faster?



# Thank you!

Molly Malone, Murray County  
Commissioner; Senior Policy  
Associate, Center for Rural Affairs

Phone: [507-227-9960](tel:507-227-9960)

Email: [mmalone@co.murray.mn.us](mailto:mmalone@co.murray.mn.us)

Tom Appel, RMEB Chair and Cottonwood  
County Commissioner

Phone: 507-220-2928

E-mail: [tom.appel@co.cottonwood.mn.us](mailto:tom.appel@co.cottonwood.mn.us)

